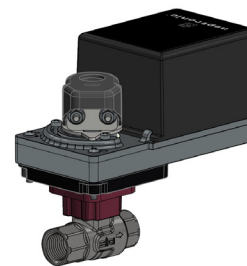


Models

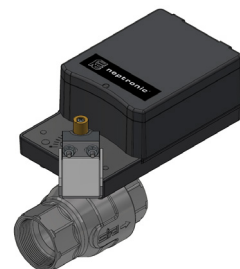
- B2AxxxxPP1: 2-way, 1/2" (DN15), female NPT
- B2BxxxxPP1: 2-way, 3/4" (DN20), female NPT
- B2CxxxxPP1: 2-way, 1" (DN25), female NPT
- B2DxxxxPP1: 2-way, 1 1/4" (DN32), female NPT
- B2ExxxxPP1: 2-way, 1 1/2" (DN40), female NPT
- B2FxxxxPP1: 2-way, 2" (DN50), female NPT



With B Series Actuators

Features

- 2-way valves available in 1/2" (DN15), 3/4" (DN20), 1" (DN25), 1 1/4" (DN32), 1 1/2" (DN40) and 2" (DN50)
- Compatible with Neptronic B series (50 in.lb [5.6 Nm]) and L series (140 in.lb [16 Nm]) actuators
- Small dimensions allow for easier installation
- Machined brass equal percentage characterized disc
- CV range from 0.3 to 230 (Kv 0.26 to 199)
- Control signal options include on/off, floating point or modulating (proportional)



With L Series Actuators

Models

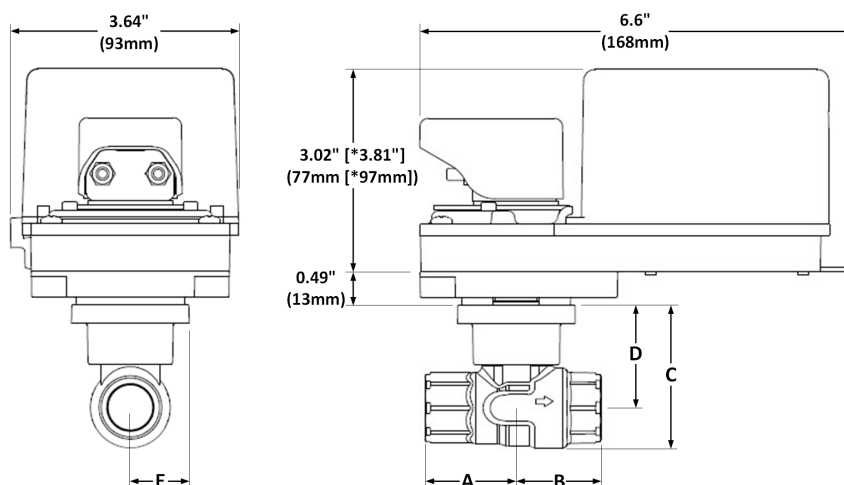
| Size | 2-Way Models | Cv | Kv | Size | 2-Way Models | Cv | Kv |
|----------------|--------------|------|------|------------------|--------------|-----|-----|
| 1/2" (DN15) | B2A0003PP1 | 0.3 | 0.26 | 1 1/4" (DN32) | B2D0100PP1 | 10 | 8.6 |
| | B2A0005PP1 | 0.46 | 0.4 | | B2D0190PP1 | 19 | 16 |
| | B2A0008PP1 | 0.8 | 0.7 | | B2D0250PP1 | 25 | 22 |
| | B2A0012PP1 | 1.2 | 1 | | B2D0370PP1 | 37 | 32 |
| | B2A0019PP1 | 1.9 | 1.64 | 1 1/2" (DN40) | B2E0190PP1 | 19 | 16 |
| | B2A0030PP1 | 3 | 2.5 | | B2E0290PP1 | 29 | 25 |
| | B2A0047PP1 | 4.7 | 4 | | B2E0370PP1 | 37 | 32 |
| | B2A0074PP1 | 7.4 | 6.4 | | B2E0460PP1 | 46 | 40 |
| | B2A0100PP1 | 10 | 8.6 | 2" (DN50) | B2F0290PP1 | 29 | 25 |
| | B2A0160PP1 | 16 | 14 | | B2F0370PP1 | 37 | 32 |
| 3/4" (DN20) | B2B0047PP1 | 4.7 | 4 | | B2F0460PP1 | 46 | 40 |
| | B2B0074PP1 | 7.4 | 6.4 | | B2F0570PP1 | 57 | 49 |
| | B2B0100PP1 | 10 | 8.6 | | B2F0660PP1 | 66 | 57 |
| | B2B0140PP1 | 14 | 12 | | B2F0850PP1 | 85 | 74 |
| | B2B0240PP1 | 24 | 21 | | B2F1200PP1 | 120 | 104 |
| 1" (DN25) | B2C0074PP1 | 7.4 | 6.4 | | B2F2300PP1 | 230 | 199 |
| | B2C0100PP1 | 10 | 8.6 | | | | |
| | B2C0190PP1 | 19 | 16 | | | | |
| | B2C0300PP1 | 30 | 26 | | | | |

Technical Data

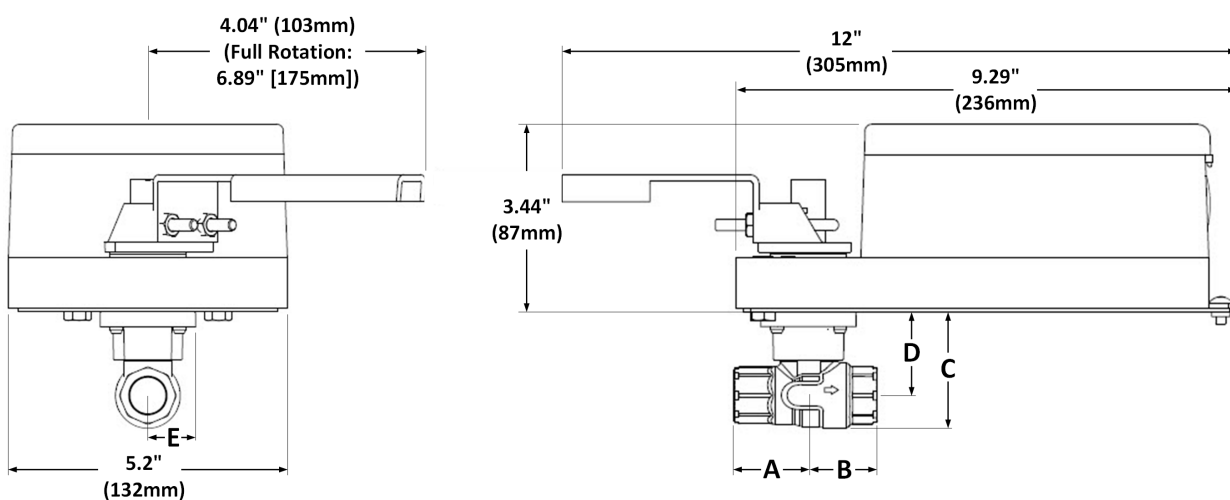
| Specification | | | All Models |
|-------------------------|--------------------|---------------|--|
| Actuator Compatibility | | | All Neptronic B and L series actuators |
| Sizes | | | 1/2" to 2" [DN15 to DN50] |
| Range Cv [Kv] | | | 0.3 to 230 [0.26 to 199] |
| Media Type | | | Water, Glycol 60% |
| Media Temperature Range | | | 0°F to 250°F [-18°C to 120°C] |
| Pressure | Body | 1/2" [DN15] | 600 psi [4137 kPa] |
| | | 3/4" [DN20] | 600 psi [4137 kPa] |
| | | 1" [DN25] | 400 psi [2758 kPa] |
| | | 1-1/4" [DN32] | 400 psi [2758 kPa] |
| | | 1-1/2" [DN40] | 400 psi [2758 kPa] |
| | | 2" [DN50] | 400 psi [2758 kPa] |
| | Close-Off | | 200 psi [1379 kPa] |
| | Differential | | 50 psi [345 kPa] |
| Leakage | | | 0% |
| Materials | Body | | Nickle-Plated Forged Brass |
| | Ball and Stem | | Chrome Platted Brass |
| | Seats | | PTFE |
| | Characterized Disc | | Brass Characterized |
| | Stem O-Rings | | EPDM |
| Flow Characteristic | A to AB | | Equal Percentage |
| | Control Angle | | 75° |
| Flow Pattern | | | 2-Way |
| | | | 2-Way |
| Rangeability | | | 100:1 |
| Valve | Connection | | EPDM |

Dimensions

Mounted on B Series Actuators

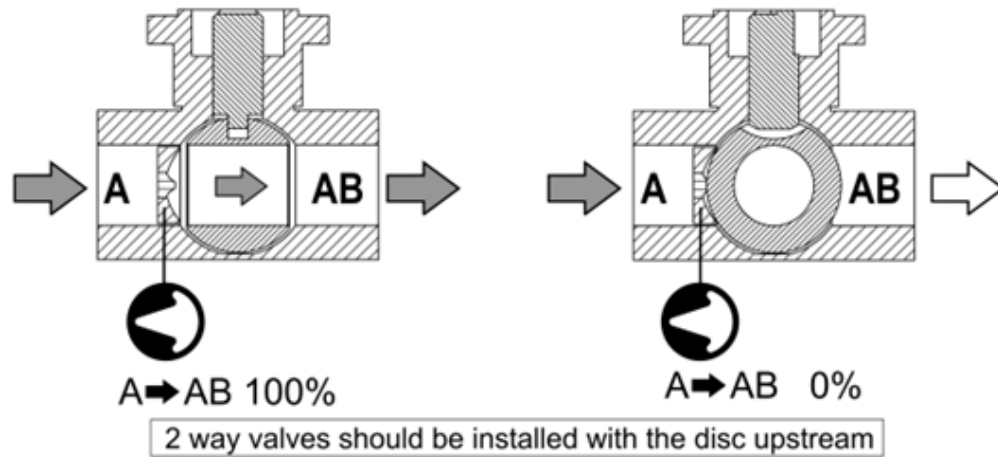


Mounted on L Series Actuators



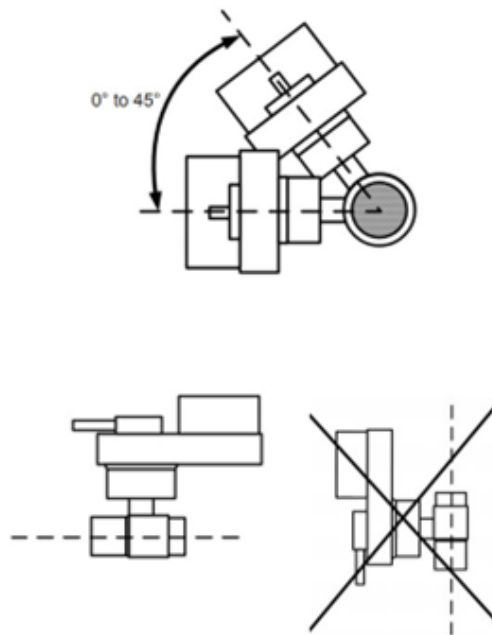
| Valve Size | 1/2" [DN15] | 3/4" [DN20] | 1" [DN25] | 1-1/4" [DN32] | 1-1/2" [DN40] | 2" [DN50] |
|------------|--------------|--------------|--------------|---------------|---------------|---------------|
| A | 1.38" [35mm] | 1.53" [39mm] | 1.89" [48mm] | 2.15" [55mm] | 2.18" [56mm] | 2.76" [70mm] |
| B | 1.28" [33mm] | 1.48" [38mm] | 1.89" [48mm] | 2.01" [51mm] | 2.20" [56mm] | 2.76" [70mm] |
| C | 2.13" [54mm] | 2.46" [63mm] | 2.81" [72mm] | 3.40" [86mm] | 3.40" [86mm] | 4.48" [114mm] |
| D | 1.53" [39mm] | 1.69" [43mm] | 1.87" [48mm] | 2.20" [56mm] | 2.20" [56mm] | 2.73" [69mm] |
| E | 0.89" [23mm] | 0.89" [23mm] | 0.94" [24mm] | 1.20" [31mm] | 1.20" [31mm] | 1.75" [45mm] |

Mechanical Installation



Installation

The valve cannot be mounted vertically. If mounted horizontally the valve must be 0° to 45° off the horizontal line across the center of the pipe. Do not install with the actuator below pipe.



Recycling at end of life: please return this product to your Neptronic local distributor for recycling. If you need to find the nearest Neptronic authorized distributor, please consult www.neptronic.com.